

**SAKRETE**

# U.S. COLD PATCH<sup>®</sup>

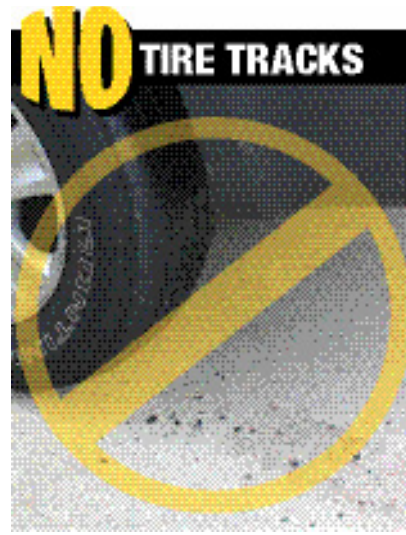
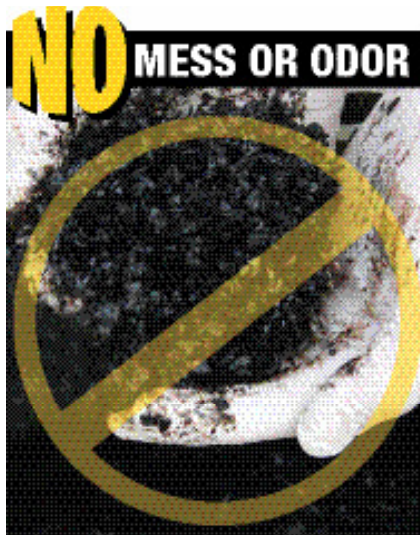
A ready-to-use, recycled asphalt product for permanent patching of potholes, cracks and other defects in blacktop surfaces. Environmentally friendly, with very low VOC's. Sakrete U.S. Cold Patch provides unmatched performance without the oily mess or nasty smell of conventional blacktop patch.



- Permanent repairs for potholes, cracks & depressions in roads & driveways
- Drive on immediately after use – sets instantly
- ‘Throw and Go’ - easy to use



Easy compaction with a car tire or tamper. No oily mess!





# U.S. COLD PATCH

## PROCEDURES:

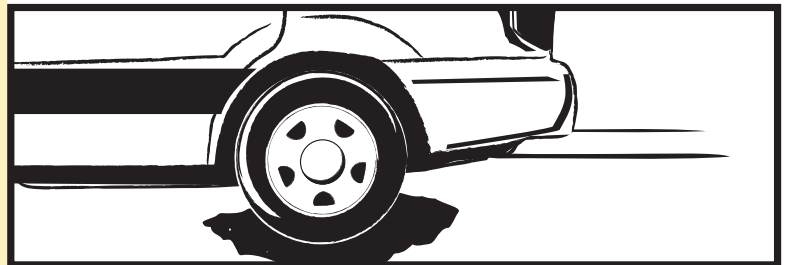
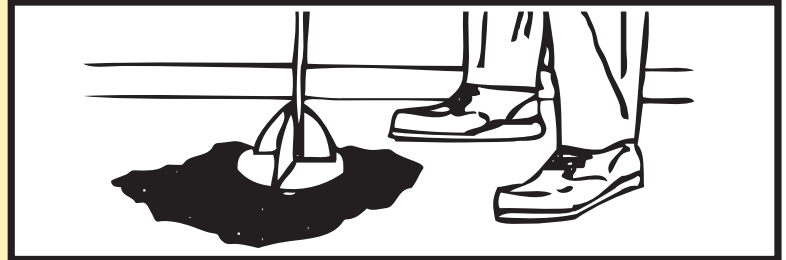
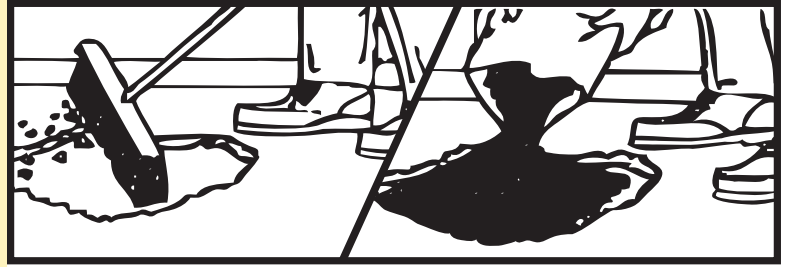
### Surface Preparation:

Sweep area to be repaired.

Be sure to remove all loose material.

### Placing:

Fill area with Cold Patch to a height that is 25% higher than the depth. For patches deeper than 2 inches, apply in layers. Compact with a tamper, a shovel, or by driving over the area with the wheels of your car. For repairs over 5 cm (2") deep, it is very important to apply this material in 2.5 to 5 cm (1 to 2") lifts (layers). Pour some material into the hole, compact it with a post or tamper and repeat until the area is repaired. Finished patch should be slightly crowned above surrounding surface.



## How many bags of US COLD PATCH do I need?

Depth/Area	0.2 m <sup>2</sup> /2 ft <sup>2</sup>	0.4 m <sup>2</sup> /4 ft <sup>2</sup>	0.6 m <sup>2</sup> /6 ft <sup>2</sup>	
5 cm (2")	1	2	3	bags
7.5 cm (3")	2	3	4	bags
10 cm (4")	2	5	6	bags

### STORAGE & SHELF LIFE:

Return any unused product to bag and store for future use.

**NOTE:** Product may compact during shipping but this does not affect product quality. If product stiffens in the bag, roll the bag over a hard surface to loosen product to a potting soil consistency.

**1.866.SAKRETE ♦ WWW.SAKRETE.COM**